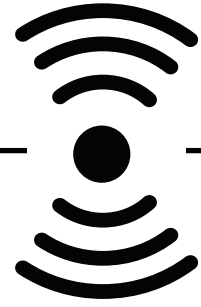


SAFETY FIRST WIRELESS CHARGERS



Overcharge protection

Overcharge protection makes sure your device is only charged when the device is requesting energy. When the battery is fully charged our chargers will immediately stop charging.



Short circuit protection

Makes sure that in case of a short circuit the device is shut down.

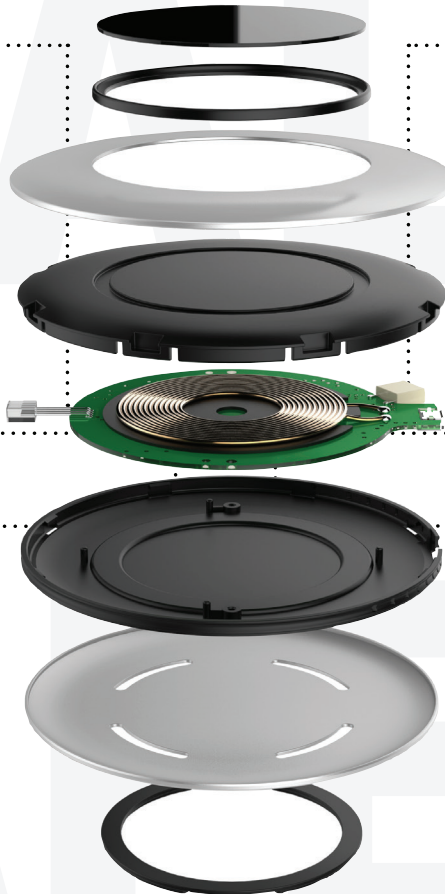


Durable A grade components

All our chargers are made with A-grade components. The casing is made out of virgin materials to meet all European standards.



The PCBA is designed to ensure you a smooth and worry free wireless charging experience. Not only do these chargers have a better quality and safety, they also last longer ensuring a much longer usage of the item.



Foreign object detection

All our wireless chargers have built-in FOD (foreign object detection) to make sure that the wireless charger will only charge your mobile device. Bad quality chargers are unable to detect other metal objects like pens or coins. This could lead to permanent damage to the wireless chargers, the object and potentially the user.



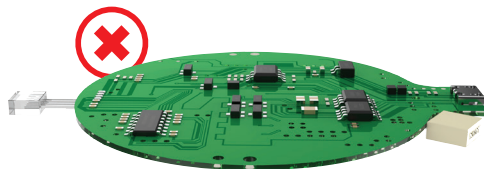
Over-current protection

Makes sure that your device only received its optimal charging current. In case of a power surge or even lightning strike the protection will make sure you and your mobile device stay safe.

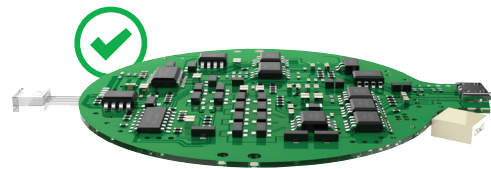


Temperature control

All our wireless chargers have temperature control built in to make sure the device does not overheat while charging.



LOW QUALITY MOTHERBOARD



OUR HIGH STANDARD MOTHERBOARD



A standby current of maximum 0.3W when not in use

All our wireless chargers have a low power consumption when not in use. Low quality chargers consume up to twice as much energy when not in use, harming your energy bill and even more important, our environment.



All our wireless chargers are tested by official institutes for CE and therefore comply with the strict regulations set within the EU.

RoHS

All our wireless chargers are tested by official institutes to check they are manufactured according to the ROHS regulation and avoid items with high contents of chemicals entering the EU. We perform additional tests on each production for extra security.