

# ARTWORK GUIDELINES

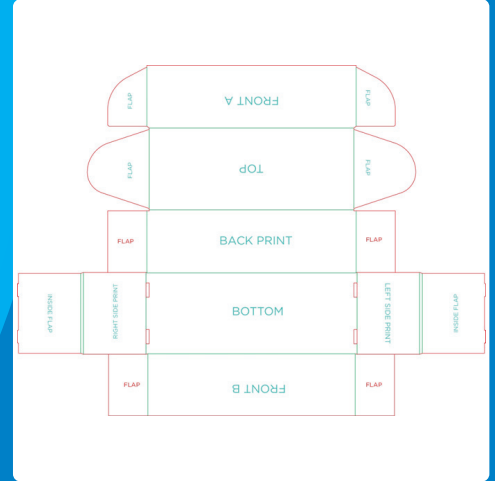
## PRINTING THE GIFT BOX

Artworks are made on die cut / line files, such as below example.  
There are 6 visible print areas:

1. Front A
2. Top
3. Back Print
4. Right Side
5. Left Side
6. Front B

**Attention1:** The Front B print area is only visible after opening the lid, as the front A flap is covering the front B print area

**Attention2:** The bottom side is mostly used as a bleed area for graphics printed on the back, front and sides of the box. We advise to leave this area empty and use this side for shipping labels or other auxiliaries.



## GENERAL INFORMATION:

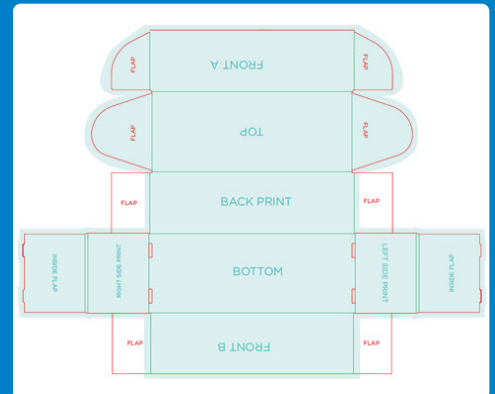
### 1. Box printing:

- a. No solid colors can be printed on the entire box or on large surfaces of the box.
- b. It is better to print a full color picture than a solid color.
- c. Around 10mm bleed is applied towards bottom area and the different flaps.
- d. Bleed from Front A and Top will cover the complete flaps

### 2. Positioning and alignments:

- a. Positioning and alignment tolerance of +/- 5 mm
- b. Avoid continuity of designs on multiple side elements
- c. Avoid alignments with the edges of the box
- d. Safety gap to edges is 30 mm.

We will apply bleed areas of around 10 mm bleeding towards bottom area and the different flaps.



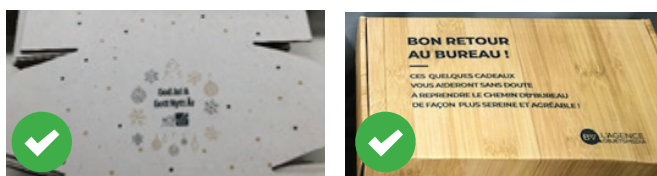
## DO'S

### 1. Use full color images:

Due to the high variation of colors, patterns and opacity of the artwork, the obvious defects that are visible on solid colors will (almost) not be visible on these prints. Picture files must be at least 250 PPI.



### 2. Choose small repetitive images, pattern or logo's



## DONT'S

### 1. Don't use a solid color on large surfaces

Due to impurities in the carton (normal for carton!):

- there will be stripes throughout the print
- there will be color differences in the outcome of the print



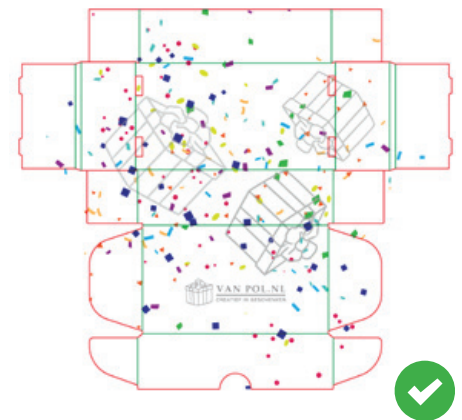
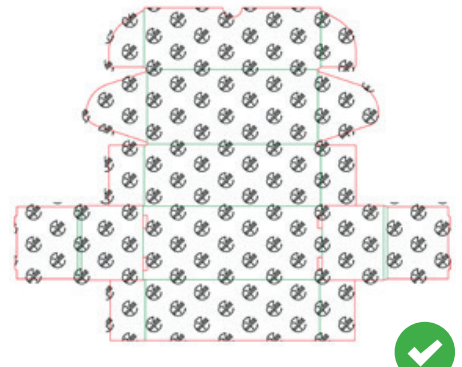
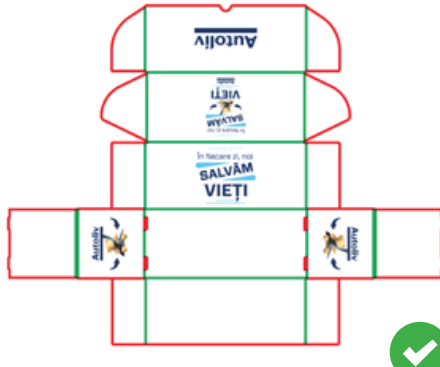
### 2. Don't use squares and other elements with fixed alignments on the box

The machines have an error margin of ±5mm



# ARTWORK GUIDELINES

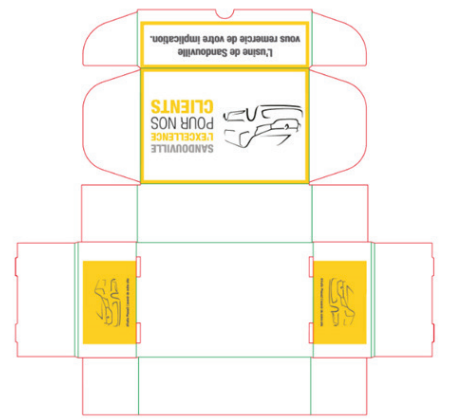
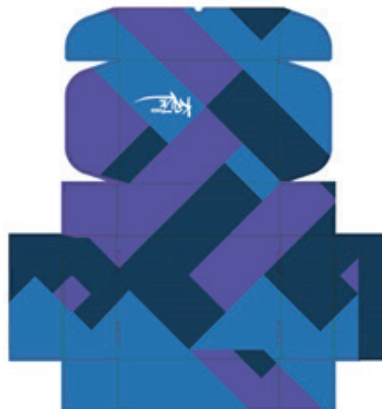
## GOOD ARTWORK EXAMPLES



## NO GO EXAMPLES



Solid colours



Positioning of squares and alignments close to edge



### Template designs

To help your customers in their search for the perfect decorated box, we have created some box designs that can be altered to any company color and combined with text and company logo.

**FOR MORE INFORMATION PLEASE CONTACT US**